

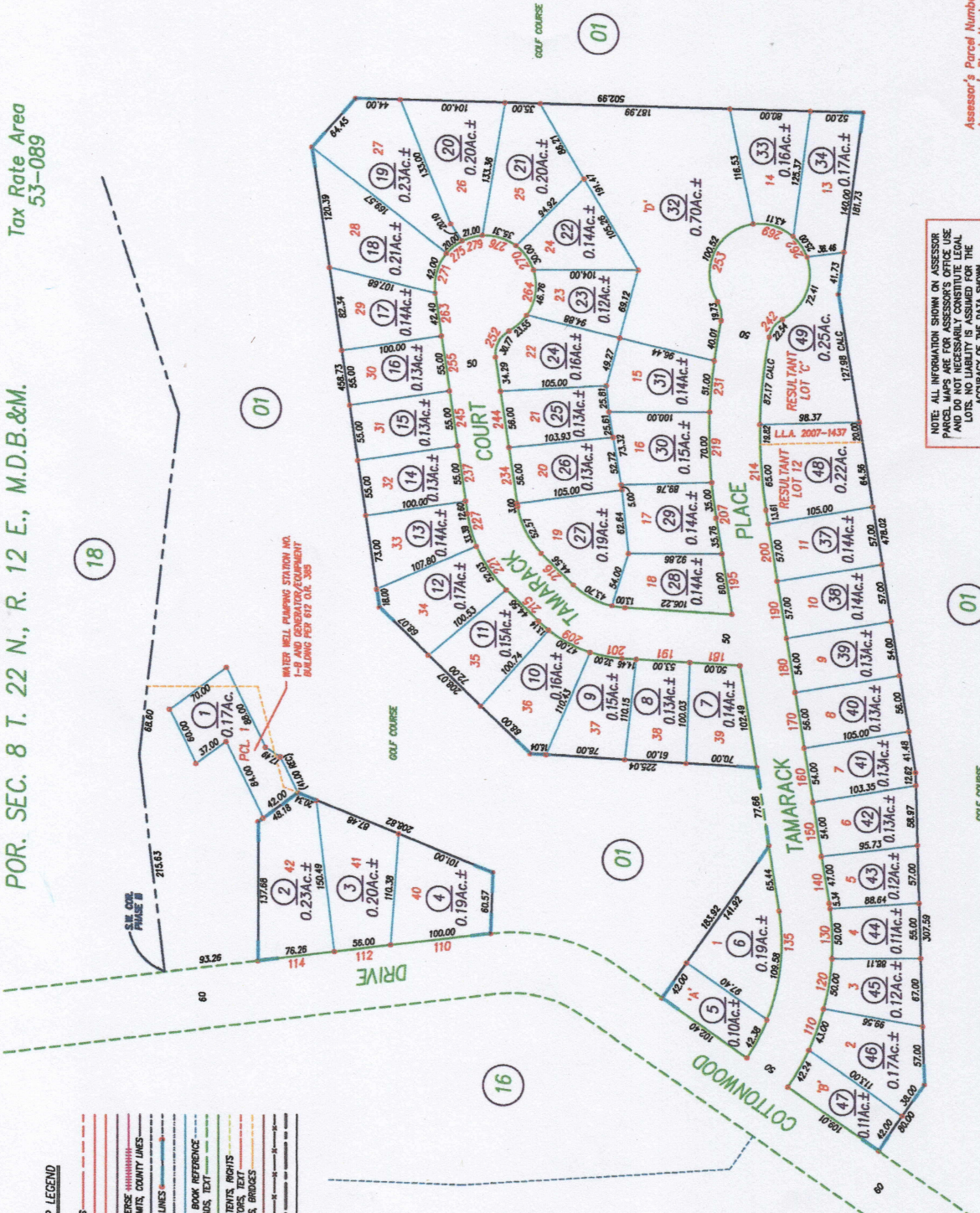
Tax Rate Area
53-089

POR. SEC. 8 T. 22 N., R. 12 E., M.D.B.&M.

129-17

ASSESSOR MAP LEGEND

COLOR	LAYER
RED	SECTIONS AND BLOCKS
210	UTILITIES
212	AIRPORT
214	STRUCTURE, "HOUSE"
216	STRUCTURE, "BARN"
218	RAILROADS
220	STATE AND COUNTY LINES
222	CITY, TOWNSHIP, COUNTY LINES
100	FLOOD SURVEY
102	SUBDIVISIONAL TRACT LINES
150	WATER
152	PROPERTY LINES
154	PROPERTY LINES OR BARY REFERENCE
156	PROPERTY LINES
158	WAYS, STREETS, ROADS, TEXT
62	GOLF COURSE
60	MINERAL SURVEYS, PATENTS, RIGHTS
40	LOT/PARCEL DESIGNATORS, TEXT
24	ALTERED PARCEL LINES, BRIDGES
22	MOUNTAIN LOCATION
9	TAX RATE AREA
BLACK	DIMENSIONAL TEXT



NOTE: ALL INFORMATION SHOWN ON ASSESSOR MAPS ARE FOR INFORMATIONAL PURPOSES ONLY. THE ASSessor'S OFFICE USES PUBLIC RECORDS TO DETERMINE PARCEL LOTS. NO LIABILITY IS ASSUMED FOR THE ACCURACY OF THE DATA SHOWN.

Assessor's Parcel Numbers Shown in Circles
Assessor's Block Numbers Shown in Ellipses

Book 129, Page 17
Plumas County Assessor's Map
2016

PLUMAS EUREKA ESTATES UNIT 7, PHASE II, R.M. BK. 6, PG. 117

DRAWN BY GREGORY WITHROW
12/7/01
RE-DRAWN BY CORY BROWN
5/16/16